

ACCESS BY THE NUMBERS

76,381

Jackson County residents received vital resources & support from ACCESS

1 in 3
residents served

1 in 5

Jackson County residents fed through the ACCESS Regional Food Bank

SUPPORTING OUR COMMUNITY THROUGH CRISIS

\$13,819,987

provided in COVID-related rental assistance

\$5,221,059

provided in COVID-related utility assistance

THE IMPACT of VOLUNTEERS

750 dedicated volunteers donated more than 40,596 hours of their time!



OUR MISSION

Through partnerships and service, ACCESS provides food, warmth, and shelter to promote stability for vulnerable populations.

BOARD OF DIRECTORS

Jonathan Bilden, Chair
J.R. Wheeler, Past Chair
Brad Earl, Vice Chair
Gregory Perkinson, Treasurer
Lilia Caballero, Secretary
Julie Brown
Daniel Bunn
Dennie Conrad
Jason Elzy
Kathy Sperle
Michael Zarosinski



3630 Aviation Way | Medford, OR 97504
(541) 779.6691 | accesshelps.org



FOOD WARMTH SHELTER



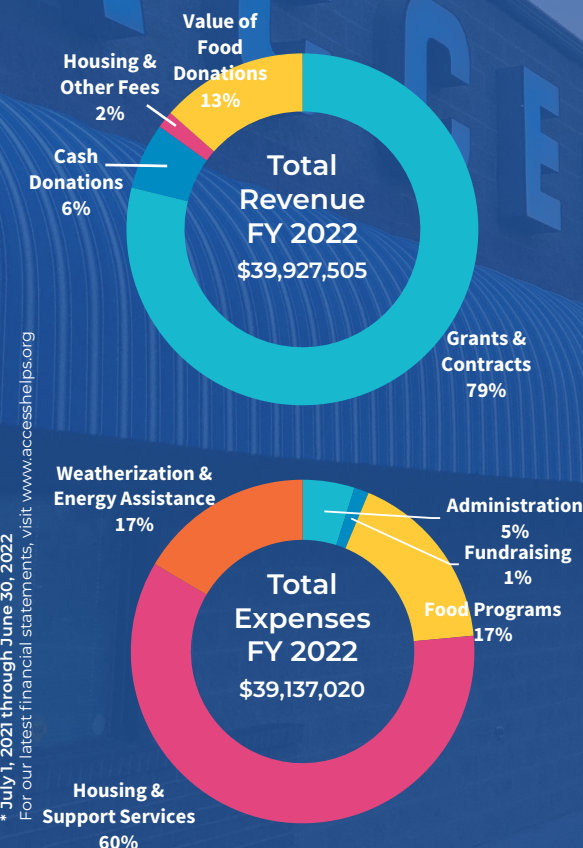
2021 - 2022 IMPACT REPORT

A YEAR IN REVIEW

Over the past year, ACCESS provided life-changing support to more than 70,000 Jackson County residents. The pandemic, wildfires, and rising costs have driven an overwhelming need for housing, utility and food assistance in addition to requests for durable medical equipment and services for Veterans and their families. It has been an honor to serve the Rogue Valley for the past 46 year and ACCESS will continue to be here for those who need us.

FINANCIAL STATEMENTS

(unaudited)



* July 1, 2021 through June 30, 2022
For our latest financial statements, visit www.accesshelps.org

FOOD

ACCESS FOOD *and* NUTRITION PROGRAMS

The ACCESS Food Programs are vital resources for Jackson County. Our network of **32** food pantries, mobile pantry, and nutrition programs are a lifeline for many families, children, Veterans, seniors, and those with disabilities.

FOOD PROGRAM HIGHLIGHTS

1 in 5

Jackson County residents fed by ACCESS Food Bank

45,618

Jackson County residents received food assistance from ACCESS

4.6 million

pounds of food distributed through our Food Bank warehouse

1,515,308

pounds of fresh produce provided to our local food pantries

1,813,262

pounds of food saved from landfills through our Fresh Alliance partners

42,000

pounds of food distributed to children through our Power Pack Program

15

new food pantries opened in FY22



ACCESS services are where the rubber hits the road in this community. – ACCESS Donor

ENERGY ASSISTANCE *and* WEATHERIZATION

ACCESS Energy and Weatherization programs help address both immediate energy assistance needs and also provide long-term solutions for reducing utility payments for low-income residents.

9,326 Jackson County residents received energy assistance

4,378 households received energy bill payment assistance

58 homes weatherized - increasing energy efficiency

\$360 average annual utility savings of weatherized homes

ACCESS HOUSING *and* HOMEOWNERSHIP PROGRAMS

ACCESS is an approved HUD Housing Counseling Agency that promotes housing stability through homeownership education, rental assistance, and affordable housing for families, seniors, Veterans, and people with disabilities.

16,821 people received housing stability services

316 people received rental and homeownership counseling and education

VETERANS PROGRAMS

386 Veterans received housing stability services

CENTER *for* COMMUNITY RESILIENCE

The Center for Community Resilience (CCR) helped more than 1,500 survivors of the 2020 wildfires by providing housing navigation case management, rental assistance, homeownership counseling and down payment assistance.

More than **\$1.4** million in rental assistance and **\$2** million in home purchases provided to fire survivors

MEDFORD SEVERE WEATHER SHELTER

The Medford Severe Weather Shelter operates in partnership with the City of Medford to provide emergency shelter in the event of extreme heat, cold, smoke, and other severe weather conditions.

1,080 Medford Severe Weather Shelter visits

MEDICAL EQUIPMENT LOAN PROGRAM

The Durable Medical Equipment Loan Program directly benefits those with medical needs - with no cost or income qualifications. This program is funded exclusively with monetary and equipment donations.

5,269 pieces of medical equipment loaned- saving our community over **\$1.5 million** in medical equipment expenses

OVER THE TOP WIG PROGRAM

Nearly **100** women with cancer and other medical diagnoses received a wig, hat or scarf